

Extraordinary **Living** *at Masonic Pathways*

A Legacy of Caring

For more than 100 years, Masonic Pathways has been brightening the lives of countless senior citizens and their families. Located in beautiful Alma, Michigan, this trusted Masonic resource is a not-for-profit Life Plan Community offering independent and assisted living, short-stay rehabilitation, assisted breathing, skilled nursing, and memory care services to over 400 residents, including Masons and non-Masons.

The many lifestyle options at Pathways are designed for residents to live as independently as possible. The comfortable, private rooms and friendly common areas of the Masonic Home offer four different levels of care and cater to residents needing 24-hour assistance. The vibrant Village Estates is an inviting duplex neighborhood. The Jack F. Sanders Rehabilitation Center cares for those recovering from illness or planning for surgery. And, the Jack F. Sanders Health Care Center is staffed with 24-hour nurses skilled in memory care for dementia or Alzheimer's. Best of all, if and when resident healthcare needs change or intensify, they won't have to move to another facility or give up familiar surroundings.

The amenities at Pathways are as diverse as Michigan's four seasons and keep residents happy year-round. From the outdoor putting green and shuffleboard courts, to the beauty shop, indoor theater, media center, game room, and Club 81, residents have daily access to many social outlets and exercise without ever having to leave the campus. For those who do want to venture out, we organize regular day trips for entertainment, dining, and shopping, not to mention year-round cultural enrichment events at Alma College.

From our beautiful campus and state-of-the-art medical facilities to the trusted friendships between staff and residents, you'll soon discover that our legacy of caring is the secret to extraordinary living.

Our Story

The Masonic Home was founded by Michigan Mason John D. Jennings of Grand Rapids. A true visionary of the late 1880s, Brother Jennings recognized a need within the Masonic fraternity for a friendly and caring environment where Masons could receive excellent care during their retirement years.

In late 1885 the Michigan Masonic Home Association was formed. Two years later, 112 acres of land adjoining Reed's Lake in Grand Rapids was purchased, and in 1891 the first Michigan Masonic Home was formally dedicated.

In February 1910 a fire destroyed the Grand Rapids home. While no lives were lost, the decision of where to rebuild needed to be made. During this time a surprising offer came from Alma native Ammi W. Wright, who generously offered the Grand Lodge of Michigan sixty acres of land along with the Alma Sanitarium for the sum of one dollar!

There have been many changes since the Masonic Home moved to Alma in 1912, yet we continue to carry on the vision of John Jennings. Now a Life Plan Community known as Masonic Pathways, we are proud to offer a true legacy of caring to each of our 400+ residents.

Scan this code using your smartphone to view Masonic Pathways Videos on our website.



LifeStyle Options

Along the Masonic Pathways continuum of care, you'll find several unique Lifestyle Options all on one convenient campus. Even if your healthcare needs intensify in the future, you won't have to move to another facility or give up your familiar surroundings. We'll be there to provide the appropriate level of support so you can continue living life as fully as possible.

The Masonic Village Estates

A vibrant community of older adults enjoy the comforts of home without the hassles of home ownership. Each spacious independent living duplex offers a full kitchen, a utility room and pantry, a deck, ample storage, and an attached garage. Several floor plans are available to better meet resident needs. Village Estates residents are invited to participate in scheduled activities and are encouraged to use the great on-campus dining facilities such as the Wright Place Café, as well as the on-site medical and specialty clinics.

The Michigan Masonic Home

Residents of the Michigan Masonic Home reside in comfortable private rooms and enjoy several social activities in spacious common areas. Residents receive one of four levels of support that include services ranging from light housekeeping to round-the-clock care. Many amenities are available to residents including on-site medical and specialty clinics.

The Jack F. Sanders Rehab & Recovery Center

Individuals recovering from surgery or prolonged illness, stroke, or an accident find the comprehensive therapy they need in our short-stay Rehab Program. Our specialized PATH program ensures you a smooth transition from home, hospital, or any healthcare facility to the Masonic Pathways Rehabilitation Center.

Private and semi-private rooms with flat-screen televisions and wireless Internet are complemented by a dining room and therapy gym. Physical, occupational, and speech therapies are available up to seven days a week, and residents participate in recreational programs designed especially for rehab patients.

The Jack F. Sanders Health Care Center

Long-Term Care

Our newly remodeled skilled nursing center offers outstanding medical care in a warm, caring environment to those who require 24-hour skilled nursing care. The center features both private and semi-private rooms, and residents enjoy amenities such as private telephones, satellite television, and many recreational activities.

Specialized Memory Care

For individuals requiring memory care services beyond those available in our assisted living program, we offer specialized memory care. Residents participate in life enrichment programs designed especially for those with advanced memory loss.

Assisted Breathing Care

Whether you or a loved one are suffering from a chronic illness or have recently experienced a traumatic injury that has resulted in ventilator dependency, Masonic Pathways is here to help.

Table of Contents

| | |
|---|----|
| LifeStyle Options..... | 1 |
| Masonic Village Estates..... | 2 |
| Michigan Masonic Home | 4 |
| Jack F. Sanders Rehab & Recovery Center | 8 |
| Jack F. Sanders Health Care Center..... | 10 |
| Financial Options | 12 |
| Admissions Process | 14 |
| FAQ | 15 |
| Masonic Advantage Program..... | 16 |



Masonic Village Estates

Independent Duplex Living

Situated within the beautiful Masonic Pathways campus, residents of the Masonic Village Estates enjoy all the comforts of home, without the hassles of home ownership. Beautiful landscaping surrounds this safe, secure, and private neighborhood of duplexes. For those who like the companionship of a pet, small to medium sized dogs and cats are allowed, and all our safe walking paths are pet-friendly.

Every Village Estates floor plan includes a full kitchen, utility room, large pantry, covered deck or three-seasons room, and an attached garage. Though most have two bedrooms with one or two baths, some do offer three bedrooms.

For those who seek an active lifestyle, we encourage volunteerism throughout the local community and on our campus, as well as participation in the many Masonic Home life enrichment events and out trips.

Village Estates residents are always welcome to eat in the formal atmosphere of the Order of the Eastern Star Dining Room, or the more casual Wright Place Café. If you prefer the privacy of your own duplex, but just don't feel like cooking, we have a special weekday takeout and delivery service available exclusively for those who live in the Village Estates.

Basic Services

- All exterior maintenance
- All interior HVAC and appliance maintenance
- Lawn care and snow removal
- Water and sewer
- Trash removal
- 24-hour campus security
- Participation in Masonic Pathways campus activities and out trips
- Access to Masonic Pathways dining services, including takeout and delivery
- Priority access to higher levels of care

Typical Resident Profile

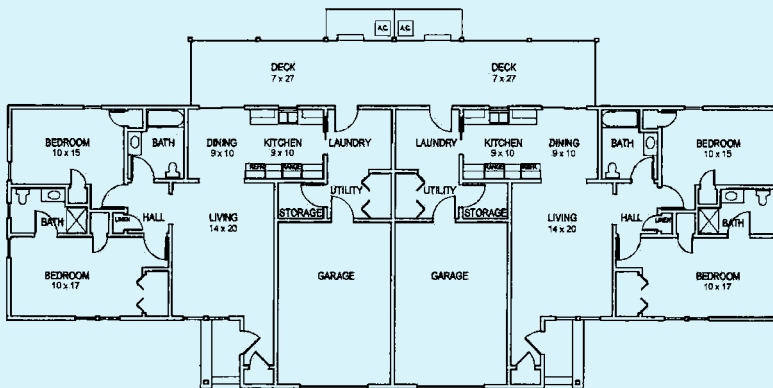
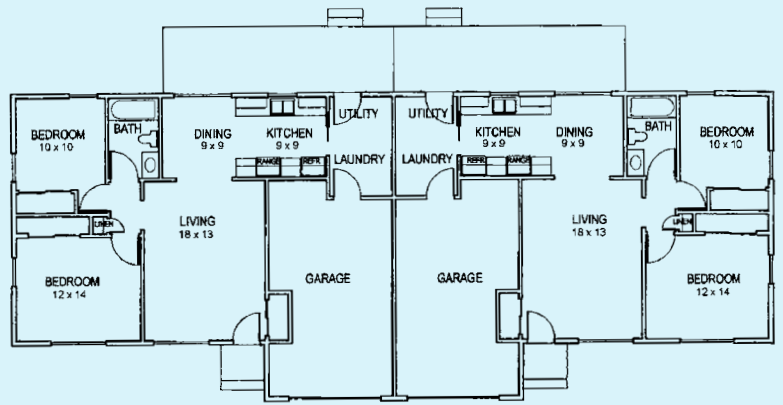
A typical resident of the Masonic Village Estates is:

- Independent in activities of daily living or is able to arrange for necessary assistance
- Able to perform housekeeping duties or is able to arrange for necessary assistance
- Able to prepare meals, arrange for assistance, or visit on-campus dining facilities
- Able to maintain safety of own home



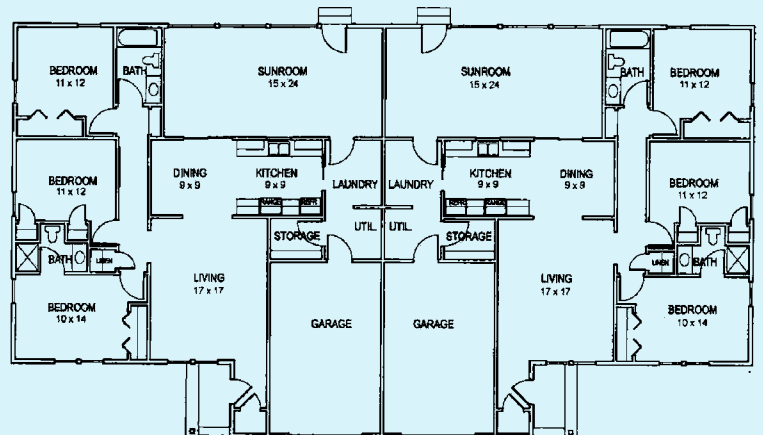
Masonic Village Estates Duplex Floor Plans

2 bedrooms, 1 bathroom
Approx. 1,278 sq. ft.
(Includes garage)



2 bedrooms, 2 bathrooms
Approx. 1,463 sq. ft.
(Includes garage)

3 bedrooms, 2 bathrooms
Approx. 2,140 sq. ft.
(Includes garage)



For sample purposes only.



Michigan Masonic Home Independent and Assisted Living

Level 1 – Basic Services

Services covered in Level One include:

- Three meals per day with appropriate nutritional counseling
- Weekly shower assistance
- Weekly light housekeeping services as well as weekly laundry and linen services
- In-room satellite television, private telephone line, and WiFi access
- 24-hour emergency call system
- Access to on-site activities center, movie theater, media center, Chapel service, Club 81 entertainment area, game room, resident kitchen, and courtyards
- Transportation as part of scheduled community outing opportunities
- Priority access to higher levels of care

Level 2 – Basic Services

Services covered in Level Two include:

- All services included in Level 1
- Medication management
- Assistance with incontinence
- Occasional wheelchair transportation to on-site appointments
- Occasional assistance with activities of daily living

Level 3 – Basic Services

Services covered in Level Three include:

- All services covered in Levels 1 and 2
- Daily bed-making and room maintenance
- Routine reminders for meals, medications, and appointments
- Routine assistance with activities of daily living

Level 4 – Basic Physical Assist Services

Services covered in Level Four include:

- All services covered in Levels 1, 2, and 3
- Specialized care provided by staff trained to serve residents requiring physical assistance



Typical Resident Profile

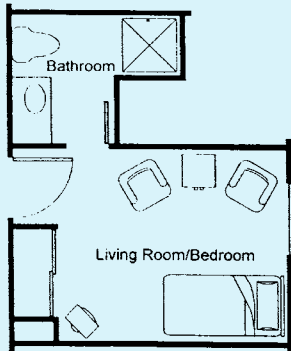
The typical profile of residents residing at the Michigan Masonic Home differs according to the level of assistance they require. Presented below are basic characteristics that most residents share.

| | Level 1 | Level 2 | Level 3 | Level 4 Physical Assist |
|---|---------|--|--|--|
| At least 55 years of age | ✓ | ✓ | ✓ | ✓ |
| Independent ambulation (may use an assistive device) | ✓ | ✓ | Capable of ambulating short distances and transferring independently | Requires physical assistance when transferring |
| Independent with activities of daily living (bathing, dressing, toileting, personal hygiene) | ✓ | May require occasional assistance in one or more areas | May require occasional assistance in one or more areas | Requires physical assistance in one or more areas |
| Continent or able to manage own incontinence | ✓ | Minor assistance | Moderate assistance | Moderate assistance |
| Medication management (able to safely order and administer medications) | ✓ | May require medication distribution | Requires medication distribution | Requires medication distribution |
| Maintain personal safety in their room | ✓ | ✓ | ✓ | Requires ongoing assistance or direction in order to maintain a safe daily routine |
| Able to activate the emergency call system | ✓ | ✓ | ✓ | ✓ |
| Appropriately interact with others and handle stress and emotions | ✓ | Generally able to | May require support | ✓ |
| Exhibits occasional forgetfulness and requires reminders and cueing | N/A | ✓ | ✓ | ✓ |
| Comprehensive health monitoring and management (including but not limited to oxygen therapy, respiratory management, diabetes care, and acute illness assessment) | N/A | ✓ | ✓ | ✓ |

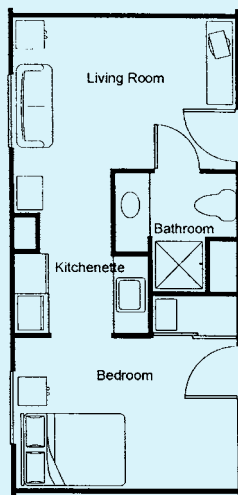


Michigan Masonic Home Independent and Assisted Living

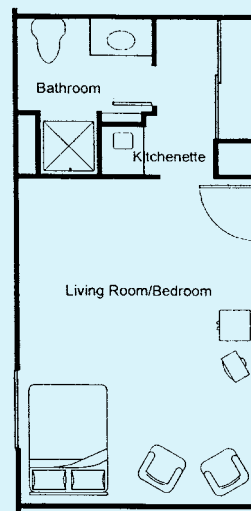
Michigan Masonic Home Independent and Assisted Living Floor Plans



Studio
Approx. 125 sq. ft.



One Bedroom Suite
Approx. 225 sq. ft.



Premium Studio
Approx. 225 sq. ft.
(Limited Availability)



Terrace Suite
Approx. 450 sq. ft.

For sample purposes only.
Actual residences vary in dimensions and floor plans. We encourage
you to visit and personally choose your residence from those available.



Delicious Dining Options

Our residents receive three meals and two snacks a day. Masonic Pathways offers several dining locations and options for our residents. Typically, dinner is served at mid-day, with a lighter meal in the early evening.

Order of the Eastern Star Dining Room

Residents who prefer a more formal dining experience are in for a treat in the Order of the Eastern Star Dining Room. With the flexibility of open seating throughout the day, residents will find a more traditional atmosphere featuring restaurant-style menus.

The Order of Eastern Star Dining Room offers daily specials and many seasonal options. Vegetarian and gluten-free meals are available. Residents are able to purchase specialty items such as tenderloin and rib eye steaks, seafood, and cocktails.

Our friendly hostess and attentive wait staff are eager to help with seating and meal selections. The Order of the Eastern Star Dining Room doesn't accept cash or tips. Guests are always welcome and may purchase dining tickets at the Michigan Masonic Home reception desk.

Wright Place Café

The Wright Place Café is shared by residents, staff, and visitors and offers an informal dining experience. Diners choose from a wide variety of tasty selections, including hamburgers, sandwiches, soups, delectable desserts, muffins, and both cold and hot beverages.

Masonic Home residents who choose to eat their meals in the Café may do so at no additional cost. Other residents, staff, and the general public are also welcome to eat in the Café, which can accept cash.

Satellite Dining Rooms

Masonic Home residents have the option to dine in a more relaxed and private setting in one of four smaller satellite dining rooms. These areas are conveniently located in the residential neighborhoods and offer a more intimate atmosphere.

Individual meals are pre-ordered by residents and are at established times, thanks to a full-time dedicated wait staff.



Jack F. Sanders Rehab & Recovery Center

Short-Stay Rehabilitation

Shorten Your PATH Home in Comfort

Whether you require a few days of therapy or weeks of rehabilitation, Masonic Pathways provides comprehensive care for those with a wide range of medical needs in a hotel-like setting.

Each room features a large bathroom, private phone line, flat-screen TV, built-in wardrobe, and complimentary WiFi. Chef-prepared meals are offered in an all new dining room setting or privately in the comfort of your room.

The environment of care plays an important role in patient recovery. Studies have shown that people heal better in a setting that is conducive to recovery. All our patients need to do is focus on improving their health.

PATH Program

Our specialized PATH program ensures you a smooth transition from home, hospital, or any healthcare facility to the Masonic Pathways Rehabilitation Center. Just let your Case Manager know that you choose Masonic Pathways for your therapy and recovery needs.

*Follow our PATH ...
Post-Acute Transitional Health*

*Redefining the PATH from
hospital to rehabilitation to home*

Pre-Admission Review

Provides you with a safe and informed care transition from home or hospital to our rehab center, including your insurance pre-authorization. You can even meet with our professional staff to pre-plan your stay!

Assessment & Orientation

Ensures that both you and your family members will be active participants in your rehabilitation process, helping to set your goals and family expectations.

Treatment & Transition

Our Rehab Team provides you with a highly individualized treatment plan and prepares you for returning home. You and your family will receive education in self-management of your ongoing health and medication needs.

Home

To confirm you are able to function safely, prior to your discharge our team will perform a home evaluation. After discharge, to ensure you remain comfortable and confident self-managing your medications, exercises, and therapies, we will continue to reach out and monitor your progress.



“People **heal better** in a setting that is **conducive to recovery.**”

Short-Stay Rehabilitation Services

- Physical Therapy
- Occupational Therapy
- Speech Therapy
- Orthopedic Rehabilitation
- Neurological Rehabilitation
- Cardiac Rehabilitation
- Respiratory Services
- Infusion Therapy
- Pain Management
- Lymphedema Management
- Bariatric Care
- Post-Operative Care
- Therapeutic Diets
- Restorative Nursing

We accept **Medicare, Medicaid**, and most **private insurances**





Jack F. Sanders Health Care Center

Long-Term, Memory, and Ventilator Dependent Care

Basic Services

- Routine personal hygiene assistance
- Medication distribution
- Meals
- Regular housekeeping and laundry services
- Satellite television, private telephone, wireless Internet access
- Spiritual support and social programs
- 24-hour emergency call system

Typical Resident Profile

A typical resident of the Jack F. Sanders Health Care Center:

- Requires 24-hour nursing care
- Requires medication distribution
- May require assistance with ambulation or transfers
- May require assistance with activities of daily living
- May require IV therapy, enteral nutrition, or oxygen therapy
- May be at risk for wandering

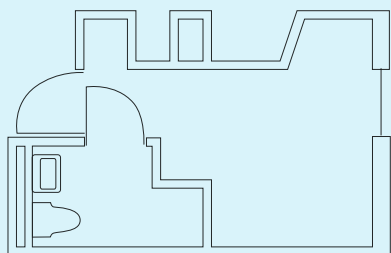
Long-Term Care

Residents requiring 24-hour skilled nursing care are welcome at the Jack F. Sanders Health Care Center. Our newly remodeled skilled nursing facility offers outstanding medical care in a warm, caring environment. The center features both private and semi-private rooms with en suite bathrooms, and residents enjoy amenities such as private telephones, satellite television, and many recreational activities.

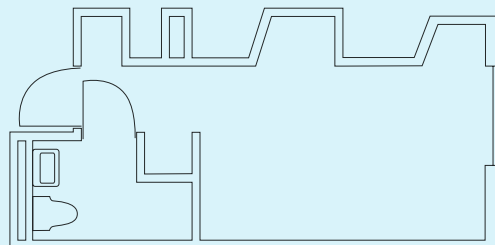
Specialized Memory Care

For individuals requiring memory care services beyond those available in our assisted living program, we have dedicated an entire unit in our Health Care Center to specialized memory care. In this safe and secure environment, residents participate in life enrichment programs designed especially for those with advanced memory loss.

Health Care Center Floor Plans



Private
Approx. 117 sq. ft.



Semi-Private
Approx. 192 sq. ft.



Respite Care

Our respite care program provides a compassionate and personalized short-term solution to alleviating the stress and possible burnout common to the daily support of caring for a loved one. We know that no one can take care of your loved one like you, but you can rely on us to offer total continuity of care in a safe, restorative environment. Planned in advance for the benefit of the caregiver, Pathways offers respite care for a period of time from a minimum of 5 days and up to 30 days.

Hospice Care

In collaboration with those specialized in palliative care, the Pathways hospice program offers pain management, symptom control, and other medical services to the terminally ill or those in the late stages of chronic disease progression.

Veteran Care

All veterans enrolled in the Veterans Affairs healthcare system are eligible for home and community-based long-term care services.

Referrals to us are made directly from the Aleda E. Lutz Veterans Affairs Medical Center in Saginaw, or other Veterans Affairs Medical Centers in Michigan.

Ventilator Dependent Care

Assisted Breathing Unit

The goal of the Masonic Pathways Assisted Breathing program is to improve the quality of life for patients who are ventilator dependent by providing the least restrictive and most home-like environment possible.

Following an individually developed care plan, uniquely designed to assist patients in achieving their highest potential, most can attain a greater degree of independence, making a world of difference in their quality of life. For some, this could include total liberation from a ventilator.

Conveniently located in central Michigan, more patients are able to receive high quality care closer to home. Family and friends throughout Michigan will find it convenient to visit, participate with the care team during weekly rounding, and enjoy social interaction with their loved one.

For further peace of mind, located adjacent to MidMichigan Medical Center - Gratiot, patients will have quick access to emergency care and specialty medical services.





Financial Options

Programs to Help You Make It Affordable

Several financial options for payment may exist dependent upon which Lifestyle Option you choose. The table below shows some possible arrangements for each option.

| | Masonic Village Estates | Michigan Masonic Home | Jack F. Sanders Health Care Center | Short-Stay Rehab Unit |
|---------------------------------|-------------------------|-----------------------|------------------------------------|-----------------------|
| Private Pay | ✓ | ✓ | ✓ | ✓ |
| Medicaid | | | ✓ | ✓ |
| Medicare | | | ✓ | ✓ |
| Other Health Plans | | | | ✓ |
| Auto Insurance | | | | ✓ |
| Long-Term Care Insurance | | ✓ | ✓ | |
| VA Aid & Attendance | ✓ | ✓ | ✓ | |
| Service-Connected VA Disability | | | ✓ | |
| Masonic Advantage Program | | ✓ | | |

Medicare

The federal government's Medicare program offers many benefits to American seniors.

Medicare Part A coverage is provided to all qualifying seniors and helps to pay for hospitalization or short-term skilled nursing home stays. There is no premium for Part A coverage.

Medicare Part B coverage is offered to qualifying seniors for a monthly premium. It provides coverage, subject to deductibles and co-pays, for many out-patient services.

Medicare Part C, or Medicare Advantage Plans, are available in many areas as an alternative to traditional Medicare Part A and B coverage. They are administered on behalf of the government by private insurance companies and, as with Part B, enrollees pay a monthly premium, deductibles, and co-pays. Masonic Pathways participates with several, but not all, Medicare Advantage Plans. Please check with the Admissions Manager to make sure that your Medicare Advantage Plan is accepted at Masonic Pathways.

Medicare Part D coverage is prescription drug coverage for everyone with Medicare. The program is designed to protect against future drug costs, and to give enrollees access to necessary medications. Medicare drug plans are run by insurance companies and other private companies approved by Medicare.

Medicaid

Medicaid is an assistance program that is jointly funded by the federal and state governments and administered by the states. One aspect of the program helps to cover the cost of nursing home care for people who have exhausted their assets. Recipients must meet a variety of requirements to qualify for Medicaid Skilled Nursing Facility (SNF) assistance. They include, but are not limited to:

- A demonstrated need for Skilled Nursing Facility (SNF) placement.
- "Countable assets" of less than \$2,000 (usually excludes a home and one car).
- A monthly income that is less than the cost of his/her nursing home care.

Upon qualifying, the recipient receives benefits to make up the difference between the rate that the facility will accept for his or her care, and what he or she is required to pay out of his or her income (the "Patient Pay Amount"). Patient Pay amounts are determined by Medicaid, and typically allow for a limited amount of personal funds, as well as funds to support a spouse who remains outside the facility, if necessary.

Long-Term Care Insurance

For residents who have long-term care insurance, Masonic Pathways will assist in initiating a claim and submit monthly statements to your provider. Long-term care insurance benefits are made payable to the insured.

Veterans Aid & Attendance Pension

Veterans and their spouses may qualify for healthcare benefits applicable to their stay at Masonic Pathways. Veterans are encouraged to contact their local Veterans Affairs office for additional information.

Special Notes

Elder Law Advice

You may want to seek the advice of an attorney who specializes in elder law, including Medicaid and long-term care, power of attorney, patient advocate designation and living will, wills and trusts, veterans benefits, probate and trust administration, guardianship, and conservatorship.

Divestment

The term "divestment" refers to giving away, transferring ownership, selling below fair market value, or removing or adding a name to any personal assets that could have been used to pay for your future care. Both Medicaid and the Masonic Advantage Program take measures to preclude people who have divested assets from receiving benefits.

Both programs prohibit divestiture at any time during the 60 months immediately prior to receiving benefits and throughout the benefit period. Both programs also require regular financial disclosures as a condition of continued enrollment.





Admissions Process

We Look Forward to Meeting You!

1 Call Our Admissions Office to Schedule a Visit:

- Take a tour of our beautiful campus and explore available Lifestyle Options.
- Be our guest for a delicious complimentary meal.
- Complete an interview and level of care assessment with our admissions team.
- Meet with the Finance Department to discuss any financial concerns you may have.
- Meet many of our great staff members and residents eager to get to know you!

3 Finalize Move-In Arrangements:

- Schedule your move-in date with the Admissions Office.
- Review our pre-admission information and move-in booklet to help you prepare for your move.
- If possible, arrange to have your personal belongings moved to campus prior to your arrival at the facility.

2 Complete and Return the Residency Application Forms:

- Your Residency Application will be reviewed by our Finance Department for approval.
- If you have not completed an interview and level of care assessment, you must do so before moving on campus.
- Reserve your chosen LifeStyle Option.
- Have your physician complete your Physician Form (valid for 3 months) and submit it along with recent chest x-ray results (within the past 12 months for the Michigan Masonic Home or within the past 90 days for the Jack F. Sanders Health Care Center) to the Admissions Office.
- Submit copies of your durable power of attorney, patient advocate for healthcare, or guardianship paperwork to the Admissions Office.

4 Transferring From a Hospital

Individuals transferring from a hospital or other healthcare facility can request that their discharge planner contact the Admissions Department at Masonic Pathways for assistance with transferring to our facility.



Frequently Asked Questions

Answers to Your Most Common Concerns

What is a Life Plan Community?

Life Plan Communities offer a combination of independent living, assisted living, skilled nursing, and short-stay rehabilitation all on one campus. Continuums like Masonic Pathways deliver a level of service, flexibility, and security that stand-alone senior housing and assisted living communities cannot provide.

Do I have to be a Mason to live at Masonic Pathways?

No. Masonic Pathways is open to any qualifying individual age 55 and over. An age waiver from the State of Michigan may be applied for an individual under the age of 55 who is in need of the services Masonic Pathways provides. There is no age restriction for those who come to Masonic Pathways for short-stay rehabilitation.

Are long-distance telephone and television services provided?

Both services are available in all areas of our campus. Satellite television and local telephone service are included in your room rate. Unlimited long-distance telephone service is available for a nominal charge.

Are personal pets allowed?

Unfortunately, we are unable to allow personal pets in the Michigan Masonic Home or the Jack F. Sanders Health Care Center. However, we do have several Pathways pets such as cats, dogs, fish, and birds that live with us for the enjoyment of residents and staff.

What transportation options are available for outside appointments, local shopping, and entertainment events?

Masonic Pathways has a helpful Transportation Department that assists residents with their transportation needs. Additionally, the city of Alma operates a local transportation service known as "Alma Transit," free to seniors over the age of 75 within the city limits.

Do you offer spiritual services?

There is a full-time Chaplain at Masonic Pathways, who provides a nondenominational service every Sunday in the Doig Chapel, as well as weekly worship service in the Jack F. Sanders Health Care Center. Our Chaplain also leads a weekly Bible study and offers residents one-on-one spiritual care.

What kinds of recreation and leisure activities are available?

The Life Enrichment Department uses resident suggestions and feedback to develop monthly calendars of activities, including shopping and off-campus trips. With the exception of outside meal costs and some special event tickets, most off-campus trips are free.

Can I get my hair cut or styled?

The Hair Company, located on the ground floor of the Michigan Masonic Home, provides hair care services, manicures, and many other specialized beauty treatments for residents.



Masonic Advantage Program Membership Has Its Benefits

As a member of the Michigan Masons or Order of the Eastern Star, you may be eligible for the Masonic Advantage Program.

As an Affiliated Mason, with the Masonic Advantage Program you receive these great benefits:

- **Rate discounts:** Receive discounted daily/monthly rates for each of the LifeStyle Options available at Masonic Pathways.
- **Priority access to higher levels of care:** If you suffer an acute illness, have a surgery, or are ready to move up to a higher level of care, you are guaranteed access to increased services.
- **Priority standing on waiting lists:** Affiliated prospective residents are placed at the top of waiting lists for available LifeStyle Options.
- **Masonic financial assistance:** Affiliated individuals who otherwise would be unable to afford care in the Michigan Masonic Home may be eligible for financial assistance through the Masonic Advantage Program. Assistance covers room and board, meals, medications and medical supplies, as well as selected supplemental services. The program also provides health insurance coverage and a modest personal allowance.

Affiliated

- Michigan Master Masons with ten or more years of continuous membership in good standing immediately prior to admission.
- The wives, widows, and mothers of Master Masons.
- Female members of a Michigan Chapter of the Order of the Eastern Star, also with ten or more years of membership in good standing immediately prior to admission.

Listen to actual Masons talk about Masonry.

Scan this code using your smartphone to view a Michigan Masons video.



A walkable campus . . .

LifeTrail® Advanced Wellness System

The LifeTrail® Advanced Wellness System promotes the essential elements of good health for older adults. From practicing good posture and balance, to greater flexibility, strength, and endurance, all can be experienced when utilizing the walking trail on the beautiful Masonic Pathways campus. The outdoor workout is designed to make it easier for users to perform daily tasks and enjoy a better quality of life.





MASONIC
PATHWAYS

1200 Wright Ave.
Alma, MI 48801
(800) 321-9357
masonicpathways.com

